

BWP Series

Area sensor with plastic case

■ Features

- 13mm slim body with fresnel lens.
- Adoption of plastic (PC/ABS) injection case
- Includes stop transmission function, Mutual interference prevention function, Job indicator Blink function, Light ON/Dark ON switching function
- Easy to distinguish of side/front and long distance with high luminance twin operation indicators
- Fast response time, max. 7ms
- 4 types of product (Optical axis pitch : 20mm, Number of optical axis : 8, 12, 16, 20)

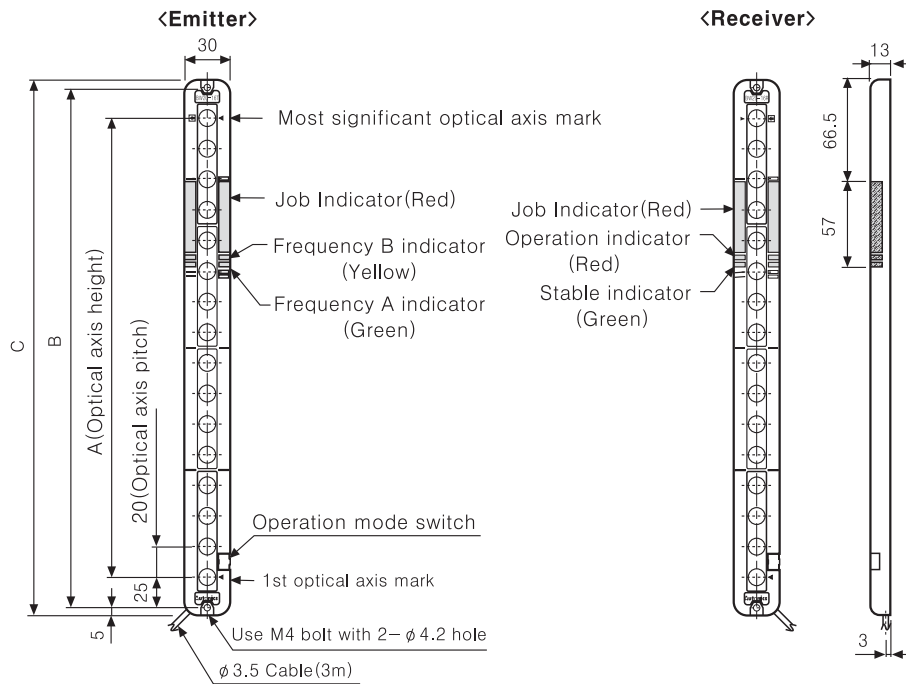
⚠ Please read "Caution for your safety" in operation manual before using.



■ Specifications

Model		BWP20-08(P)	BWP20-12(P)	BWP20-16(P)	BWP20-20(P)
Sensing type		Transmitte beam type			
Sensing distance		0.1 ~ 5m			
Sensing target		Opaque materials of min. ϕ 30mm			
Optical axis pitch		20mm			
Number of optical axis		8pcs	12pcs	16pcs	20pcs
Sensing width		140mm	220mm	300mm	380mm
Pointing angle		Within $\pm 5^\circ$ (At over 3m sensing distance)			
Power supply		12~24VDC $\pm 10\%$ (Ripple P-P:Max. 10%)			
Protection circuit		Includes			
Current consumption		Emitter : Max. 80mA, Receiver : Max. 80mA			
Control output		• NPN open collector output Load voltage:Max. 30VDC, Load current:Max. 150mA, Residual voltage:Max. 1VDC • PNP open collector output Load current:Max. 150mA, Output voltage:Min.(Power supply-2.5)VDC			
	Operation mode	Light ON/Dark ON switching			
	Short-circuit protection	Built-in			
	Response time	Max.6ms(Frequency B select Max. 7ms)			
Light source		Infrared LED(850nm modulated)			
Synchronization type		Timing method by synchronous line			
Interference protection		Interference protection by master/slave function			
Environment	Ambient temperature	$-10 \sim +55^\circ\text{C}$ (at non-freezing status)			
	Storage temperature	$-20 \sim +60^\circ\text{C}$			
	Ambient humidity	35 ~ 85%RH			
	Storage humidity	35 ~ 85%RH			
	Ambient illumination	Sunlight : Max. 11,000lx, Incandescent lamp : Max. 3,000lx			
Noise strength		The square wave noise by the noise simulator (Voltage: $\pm 240\text{V}$, Period:10ms, Pulse width:1 μs)			
Dielectric strength		1,000VAC 50/60Hz for 1minute			
Insulation resistance		Min. 20M Ω (500VDC)			
Vibration		1.5mm amplitude at frequency of 10 ~ 55Hz in each of X, Y, Z directions for 2 hours			
Shock		500m/s ² (50G) in X, Y, Z directions for 3 times			
Protection		IP40 (IEC standard)			
Material		• Body : PC/ABS, Lens : PMMA			
Cable		Emitter : ϕ 3.5mm, 4P, 3m / Receiver : ϕ 3.5mm, 4P, 3m			
Unit weight		Approx. 0.43kg (For 20 optical axes)			

■ Dimensions

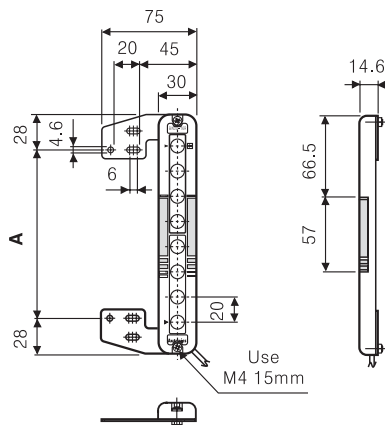
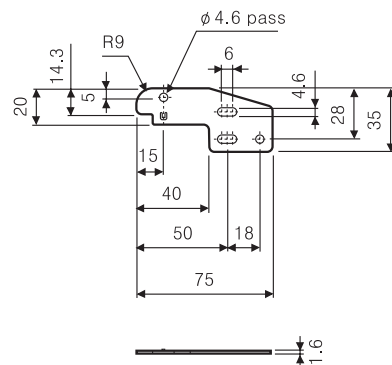


Application model	A	B	C
BWP20-08	140	180	190
BWP20-12	220	260	270
BWP20-16	300	340	350
BWP20-20	380	420	430

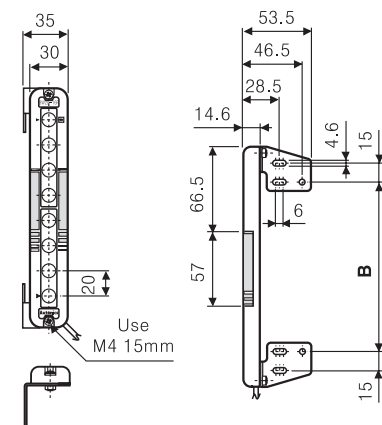
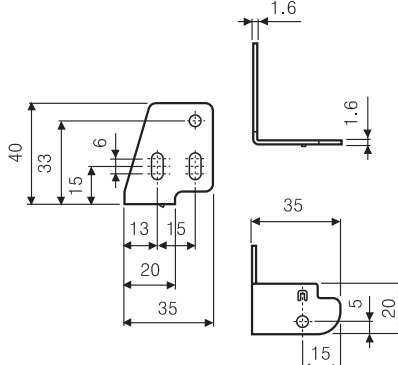
◎ Mounting of bracket

(Unit:mm)

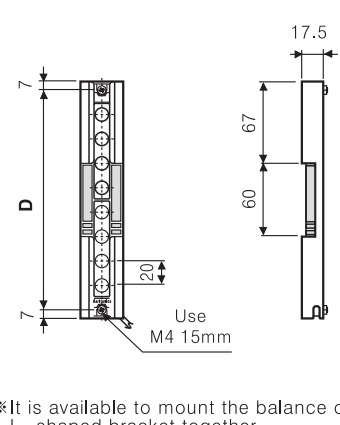
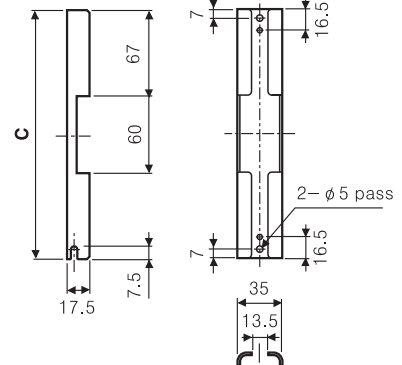
● BK-BWP-ST (Equilibrium bracket) Option



● BK-BWP-L (L-Shaped bracket) Option



● BK-BWP-P (Protection bracket) Option



※ It is available to mount the balance or L-shaped bracket together..

Model	A[mm]	B[mm]	BK-BWP-P		
			Name of bracket	C[mm]	D[mm]
BWP20-08	134	160	BK-BWP-P08	194	180
BWP20-12	214	240	BK-BWP-P12	274	260
BWP20-16	294	320	BK-BWP-P16	354	340
BWP20-20	374	400	BK-BWP-P20	434	420

※ Bracket is an option.

(A) Counter

(B) Timer

(C) Temp. controller

(D) Power controller

(E) Panel meter

(F) Tacho/Speed/Pulse meter

(G) Display unit

(H) Sensor controller

(I) Switching power supply

(J) Proximity sensor

(K) Photo electric sensor

(L) Pressure sensor

(M) Rotary encoder

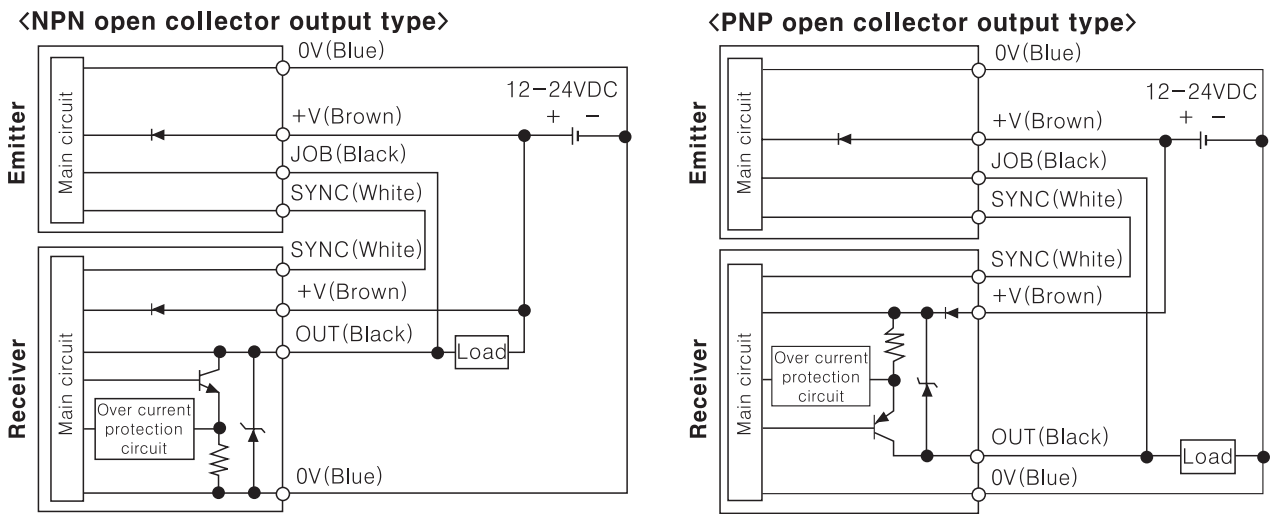
(N) Stepping motor & Driver & Controller

(O) Graphic panel

(P) Production stoppage models & replacement

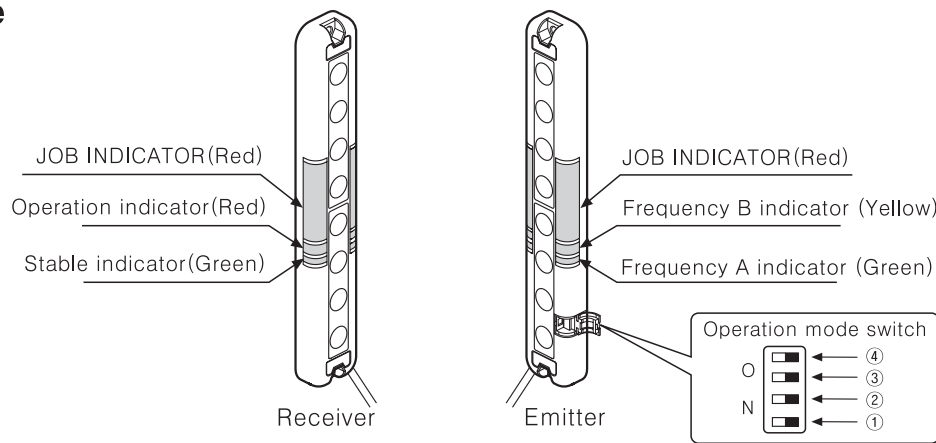
BWP Series

Input/Output circuit and connection diagram



※If the receiver OUT(Black) line and the emitter JOB(Black) line are not connected each other, the JOB indicator of the emitter is not operated and maintain the light status.

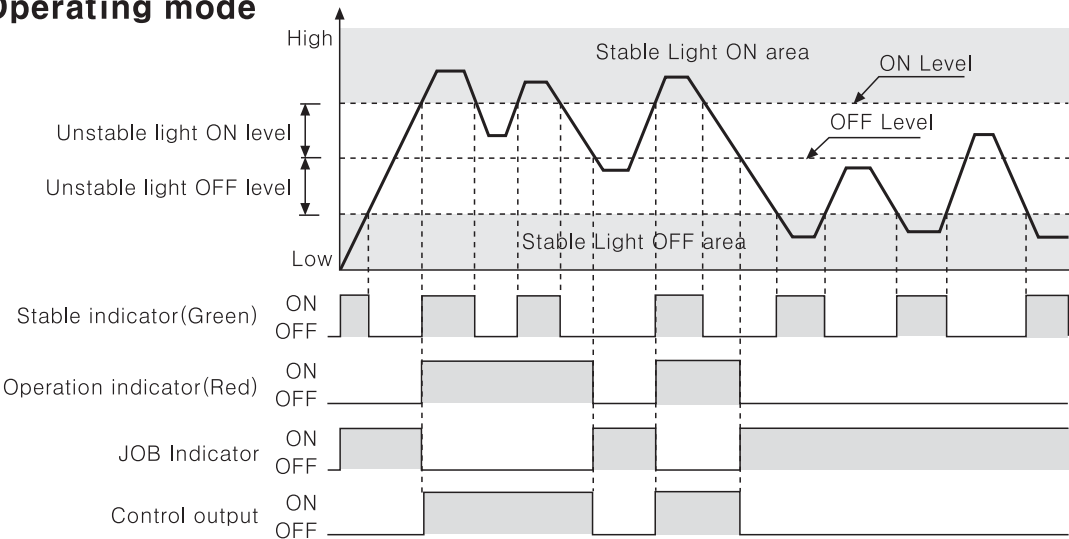
Structure



◎Operation mode switch

No	Function	Switch OFF	Switch ON
①	Transmission frequency selection	Frequency A	Frequency B
②	Light ON/Dark ON selection	Light ON operation	Dark ON operation
③	Light/flashing of JOB indicator selection	JOB indicator with light	JOB indicator with flashing
④	JOB/TEST selection	Normal mode	TEST mode

Operating mode

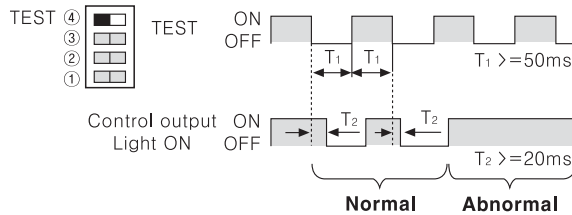


■ Functions

◎TEST(Stop transmission function) functions

In TEST mode, emission is stopped and Green & Yellow LED on emitter flashes alternately. It is available to check whether sensor operates properly when the transmission is stopped. As it is changed to dark status, control output will be OFF in Light-ON mode and ON in Dark-ON mode.

●Control output pulse by TEST input



◎Interference prevention function

In case of using 2 pcs of sensor in serial or parallel in order to extend sensing height, the detection can be failed because of their light interference. This function is to avoid the light interference as operating a sensor in transmission frequency A and another sensor in transmission frequency B to protect these kinds of failures.

	Operation mode switch	Frequency A, B indicator
Sensor(A) (Transmission frequency A)	④ ③ ② ① FREQ.A	JOB IND. Frequency B (Yellow) Frequency A (Green)
Sensor(B) (Transmission frequency B)	④ ③ ② ① FREQ.B	JOB IND. Frequency B (Yellow) Frequency A (Green)

◎Switching function of Light-ON / Dark-ON

The control output is ON when it is lighted in Light-ON mode and it is ON when it is shaded in Dark-ON mode.

It is available to select with user's preference.

	Operation mode switch	Control output operation
Light-ON	④ ③ ② ① Light-ON	It is ON when it is lighted.
Dark-ON	④ ③ ② ① Dark ON	It is ON when it is shaded.

◎Switching function of Lighting / Flashing of JOB indicator

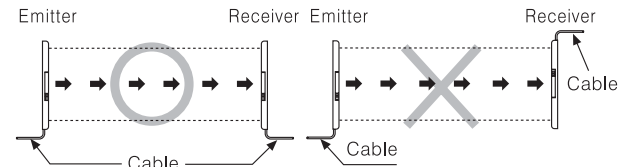
JOB indicator will be lighted and flashed to make out work sensing operation more easily.

Operation mode switch	JOB indicator operation
④ ③ ② ① GLOW	Lighting or Light-out
④ ③ ② ① BLINK	Flashing or Light-out

■ Installation

◎For direction of installation

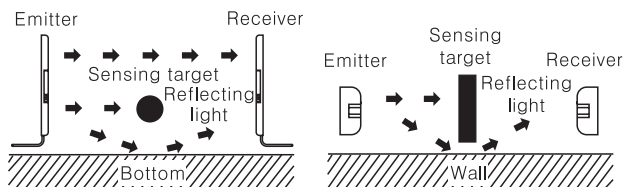
Emitter and receiver should be installed as same up/down direction.



◎For reflection from the surface of wall and flat

When installing it as below, the light can be reflected from the surface of wall and flat will not be shaded.

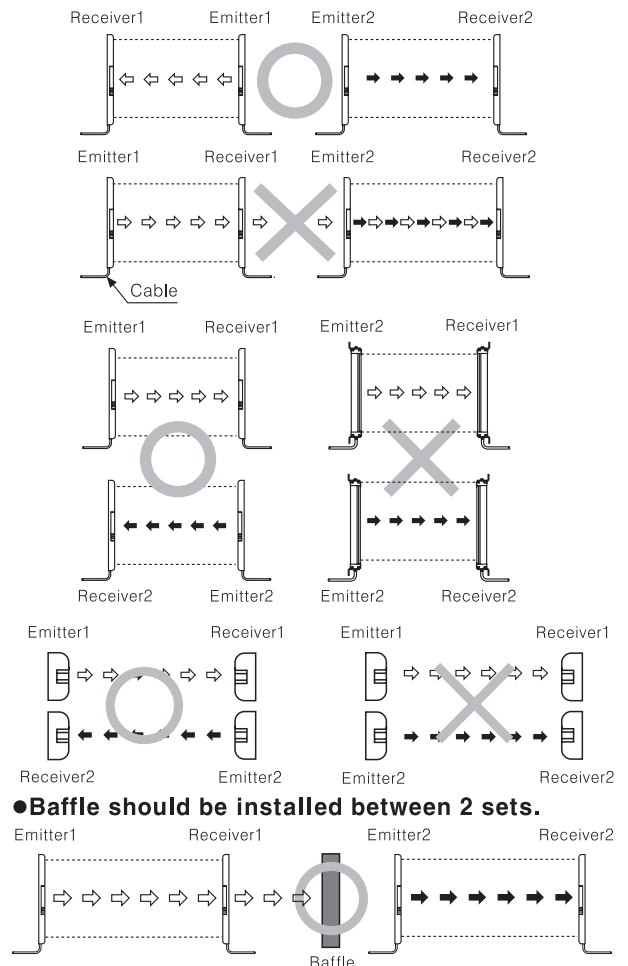
Please check whether it operates normally or not with a sensing target before using.
(Interval distance : Min. 0.3m)



◎For prevention of interference

It may cause interference when installing more than 2 sets of the sensor. In order to avoid the interference of the sensor, please install as following figures and use the interference prevention function.

●Transmission direction should be opposed between 2 sets.

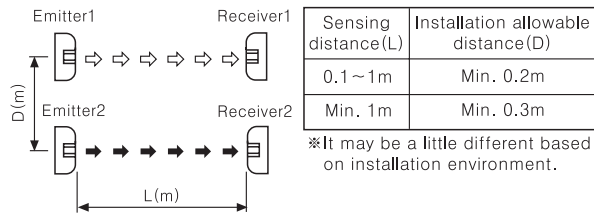


●Baffle should be installed between 2 sets.

- (A) Counter
- (B) Timer
- (C) Temp. controller
- (D) Power controller
- (E) Panel meter
- (F) Tacho/Speed/Pulse meter
- (G) Display unit
- (H) Sensor controller
- (I) Switching power supply
- (J) Proximity sensor
- (K) Photo electric sensor
- (L) Pressure sensor
- (M) Rotary encoder
- (N) Stepping motor & Driver & Controller
- (O) Graphic panel
- (P) Production stoppage models & replacement

BWP Series

- Keep sufficient distance between two sets of sensors to avoid mutual interference.



■ Operation indicator

Item	Emitter			Receiver			Control output
	Indicator			Indicator			
	Green	Yellow	JOB indicator	Green	Red	JOB indicator	
Power on	☀	●	—	—	—	—	—
FREQ. A operation	☀	●	—	—	—	—	—
FREQ. B operation	☀	☀	—	—	—	—	—
TEST	◐	◑	☀	☀	●	☀	OFF
Stable light ON	—	—	●	☀	☀	●	OFF
Unstable light ON	—	—	●	●	☀	●	ON
Unstable light OFF			☀	●	●	☀	ON
Stable light OFF	—	—	☀	☀	●	☀	OFF
Flashing function ON			◐	☀	●	◐	OFF
Synchronous line malfunction	—	—	☀	◐	◑	☀	OFF
Overcurrent	—	—	☀	◐	◐	☀	OFF

Display classification list	
☀	Lighting
●	Light out
◐	Flashing by 0.3 sec.
◐ ◐	Flashing simultaneously by 0.3 sec.
◐ ◐	Cross-Flashing by 0.3 sec.

※The operation of 'Operation indicator(Red)', 'JOB indicator (Red)', 'Control output' is for Light ON mode, it is operated as reverse for Dark ON mode. (In case, malfunction of synchronous line and overcurrent occurs, control output is OFF regardless of the mode.)

■ Inspection/Treatment for malfunction

Malfunction	Caution	Treatment
Non-operation	Power supply	Supply rated power
	Cable disconnection incorrect connection	Check the wiring
	Rated connection failure	Use within rated sensing distance
Non-operation in sometimes	Pollution by dirt of sensor cover	Remove dirt by soft brush or cloth
	Connector connection failure	Check the assembled part of the connector
Control output is OFF even though there is not a target object.	Out of rated sensing distance	Use within rated sensing distance
	There is an obstacle to cut off the light emitted between emitter and receiver	Remove the obstacle
	There is a strong electric wave or noise generated by such as motor, electric generator, high voltage line etc.)	Put away the strong electric wave or noise generator.
LED display for synchronous line malfunction	Synchronous line incorrect connection or disconnection	Check the wiring
	Damage on synchronous circuit of emitter or receiver	Contact to our company
LED display for overcurrent	Control output line shorted	Check the wiring
	Over load	Check the rated load capacity