



Lustre Detection Sensor Head
CZ-H72 **NEW**

SUPER RGB Sensor

Lustre Detection Sensor Head
is newly developed

Glossy objects



Matt objects



Digital RGB Sensor Amplifier
CZ-V20



It can detect lustre without being affected by colours

Try the performance of Lustre Detection Sensor Head

All the features you need for stable lustre detection

Conventional photoelectric sensors can't come close

NEW

Lustre Detection Sensor Head CZ-H72

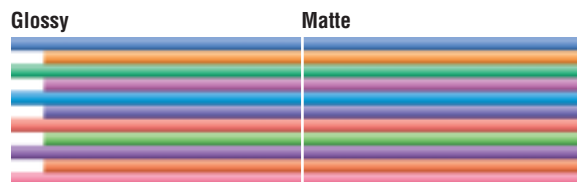


Detecting presence/absence of adhesive on targets It extracts only the lustre component from the target's surface

Most targets reflect both regular and diffuse light components. The special **lustre capturing** optics in the CZ-H72 sensor head extract only the lustre component and eliminate the undesirable effects of diffuse reflections.

Unaffected by coloured patterns or print below a glossy surface

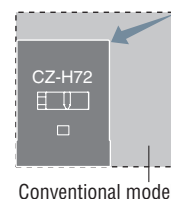
The CZ-H72 can reliably detect targets by their lustre level, without being affected by colours or print



*The glossy level may vary depending on printing ink condition.

Lighter and smaller sensor head (Patent pending)

Light is emitted using a fibreoptic cable. Designing the light emitting electronics in the amplifier, rather than the sensor head, results in significant size reduction.

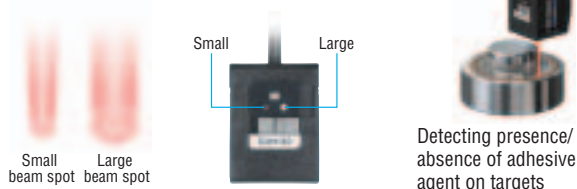


1/2 size of conventional models

Selectable beam spot size

Choose from 5 mm or 3 mm diameter beam spots (when detecting from 15 mm)

Note: Total detecting range is from 10 to 20 mm

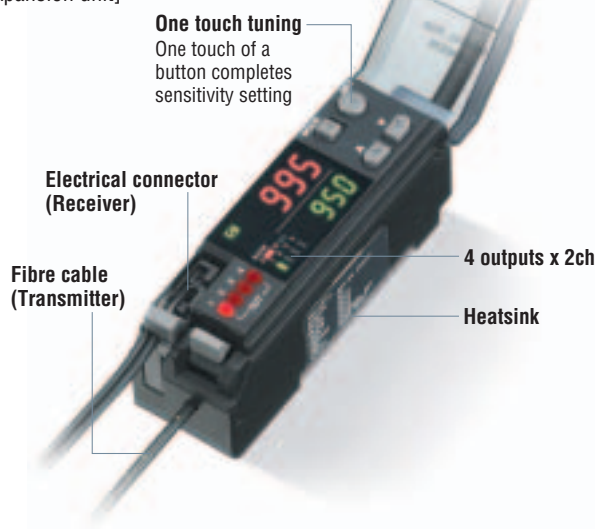


Amplifier for lustre detection sensor

Digital Color Sensor Amplifier for Lustre Detection Sensor

CZ-V21A(P) [Main unit]

CZ-V22A(P) [Expansion unit]



Digital display indicates gloss levels Easy setup with dual digital display

Industrial first

The measured value and the setting value can be viewed simultaneously. In addition, the sensitivity can be easily fine-tuned with the touch of a button.

FILM mode for detecting presence/absence of films (Patent pending)

World's first

The amplifier features a built-in FILM mode, which can be selected for difficult detection of such targets as packaging films for cigarettes or Compact Discs. These films exhibit birefringence, which can prevent stable detection in conventional photoelectric sensors.



Detecting presence/absence of wrapping film

Response frequency 200μs

Fastest in its class

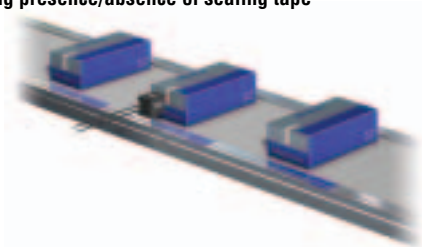
One unit can detect 4 different glossy levels

Most levels in its class

Lustre Detection Sensor Head ----- Applications in various industries

Food/Pharmaceutical

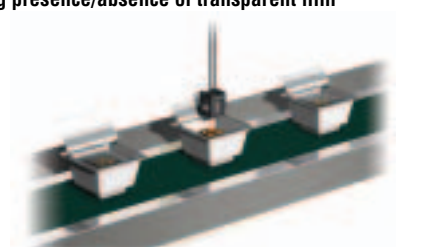
Detecting presence/absence of sealing tape



Detects presence/absence of sealing tape. It stably detects patterned transparent sticker without being affected by background colours or patterns.

Food/Pharmaceutical

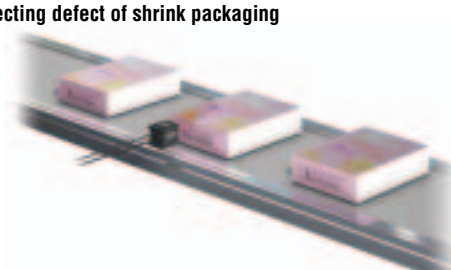
Detecting presence/absence of transparent film



Detects presence/absence of transparent film. It can stably detect targets without being affected by vibration.

Packaging

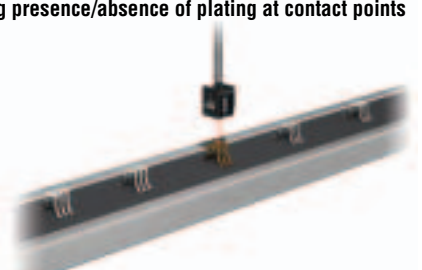
Detecting defect of shrink packaging



Detects shrink film wrapping defects. FILM mode reduces dual refraction from films to stably detect targets.

Electric/Electronic industry

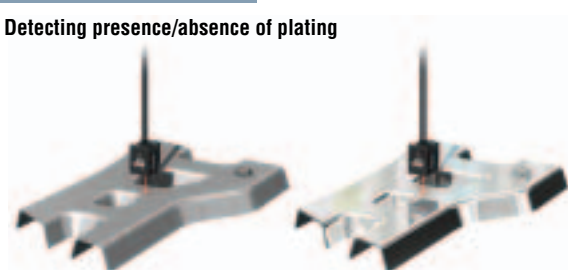
Detecting presence/absence of plating at contact points



Detects presence/absence of plating electrodes. With selectable large/small beam spots, it can stably detect small targets.

Automotive/Metal


Detecting presence/absence of plating



Detects presence/absence of plating. It digitally indicates lustre level. Sensitivity setting or fine adjustment are easily performed with simple push buttons.

Automotive/Metal

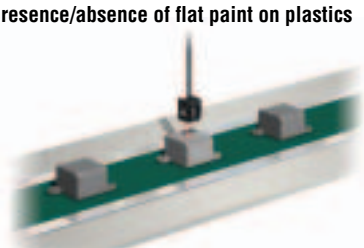
Detecting presence/absence of adhesive agent on a sealer (low temperature)



Detects presence/absence of adhesive. The sensor head is half the size of conventional models, enabling more flexible mounting.

Plastic/Moulding


Detecting presence/absence of flat paint on plastics



Detects different types of moulded articles by checking presence/absence of flat paint. It can recognise up to 4 different types of targets without tooling changes.

General

Detecting presence/absence of hot-melt coating/adhesive agent



Detects presence/absence of hot-melt coating. It stably detects targets without being affected by the targets' colours or patterns.

Specifications

Sensor head

Type	Lustre detection (Adjustable beam spot)	Adjustable spot	Lustre-cancel	Lustre-cancel, small beam spot	Fluorescence detection UV
Model	CZ-H72 NEW	CZ-H32	CZ-H35S	CZ-H37S	CZ-H52
Detection range	15 mm (Centre) ²	50 to 95 mm (Recommended: 70 mm)	28 to 52 mm (Recommended: 40 mm)	11 to 20 mm (Recommended: 15 mm)	25 to 55 mm (Recommended: 35 mm)
Smallest spot diameter	Small: 3 mm dia. Large: 5 mm dia. at reference distance of 15 mm	Small: 3 mm dia. Medium: 4.5 mm dia. Large: 5.5 mm dia. at respective reference distance ¹	4.5 mm dia. at reference distance of 40 mm	1 mm dia. at reference distance of 16 mm	10 mm dia. at reference distance of 25 mm
Detection angle	Small: Horizontal ±4°, vertical ±3° Large: Horizontal ±4.5°, vertical ±3°	—	—	—	—
Light source	Red LED (665 nm)	Red LED (665 nm)/Green LED (520 nm)/Blue LED (465 nm)			UV (ultraviolet) LED (375 nm) ³
Receivable wavelength (Receiver)	—	—			425 to 550 nm
Minimum bend radius of fibre	25 mm	25 mm		15 mm	—
Ambient light	Incandescent light: 10,000 lux max., Sunlight: 20,000 lux max.				
Ambient temperature	-10 to +55°C, No condensation				
Vibration	10 to 55 Hz, double amplitude: 1.5 mm, 2 hours in each of X, Y and Z axis directions				
Enclosure rating	IP40				
Material	Housing	Fibreglass reinforced plastic			
	Lens cover	Glass	Polyarylate	Triacetate, Polyarylate (Metal section: TYPE 304 stainless steel)	Glass
Weight (including 2-m cable)	Approx. 50 g	Approx. 40 g		Approx. 45 g	Approx. 40 g

1. Reference distance: 65 mm for Small, 60 mm for Medium, and 50 mm for Large
2. Small beam spot: 15 \pm 3 mm, Large beam spot: 15 \pm 5 mm
3. The CZ-H52 emits ultraviolet light from the transmitter. Do not directly look at the light source while in operation.

Amplifiers for CZ-H72

Model	NPN	CZ-V21A	CZ-V22A
	PNP	CZ-V21AP	CZ-V22AP
Unit type (Main/expansion)	Main unit		Expansion unit
Response time	200 μ s (HIGH SPEED)/1 ms (FINE)/ 4 ms (TURBO)/8 ms (SUPER)		
Control output ¹	NPN (PNP) open-collector x 4 channels, 40 VDC (30 VDC) max., Up to 100 mA for one output, Up to 200 mA in total of 4 outputs, Residual voltage: 1.0 V max.		
Protection circuit	Reverse-polarity protection, overcurrent protection, surge absorber		
External calibration input	Non-voltage input, Input time: 20 ms min.		
External shift input	Non-voltage input, Input time: 20 ms min.		
Timer function	Timer OFF/OFF-delay/ON-delay/One-shot, Timer time: 1 to 1,000 ms adjustable		
Power supply	24 VDC, Ripple (P-P): 10% max.		
Current consumption	Normal mode: 1.5 W (62.5 mA max.), Eco-mode: 1 W (42.0 mA max.)		
Ambient temperature ²	-10 to +55°C, No condensation		
Vibration	10 to 55 Hz, double amplitude: 1.5 mm, 2 hours in each of X, Y and Z axis directions		
Material	Housing, cover: Polycarbonate		
Weight (with 2-m cable)	Approx. 110 g	Approx. 100 g	

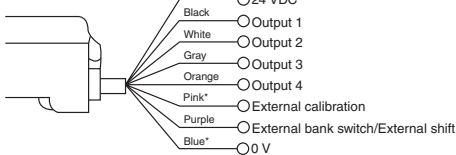
1. 20 mA max. when several units are connected.
2. When several units are connected, the acceptable ambient temperature varies depending on the conditions given below. To connect several units, be sure to mount them to a DIN rail and to limit the output current to a maximum of 20 mA. When 1 or 2 units are connected: -10 to +50°C When 3 units are connected: -10 to +45°C
Note: The expansion unit of the FS-V20 Series cannot be connected to the main unit of the CZ-V20 Series. To connect the FS and CZ Series units, connect the expansion unit of the CZ-V20 Series to the main unit of the FS-V20 Series. To connect two or more expansion units, connect the CZ-V20 Series units on the right of the FS-V20 Series units.

Amplifiers for CZ-H32/H35S/H37S/H52

Model	NPN	CZ-V21	CZ-V22
	PNP	CZ-V21P	CZ-V22P
Unit type (Main/expansion)	Main unit		Expansion unit
Response time	200 μ s (HIGH SPEED)/1 ms (FINE)/ 4 ms (TURBO)/8 ms (SUPER)		
Control output ¹	NPN (PNP) open-collector x 4 channels, 40 VDC (30 VDC) max., Up to 100 mA for one output, Up to 200 mA in total of 4 outputs, Residual voltage: 1.0 V max.		
Protection circuit	Reverse-polarity protection, overcurrent protection, surge absorber		
External calibration input	Non-voltage input, Input time: 20 ms min.		
External bank switch input (C/C+I mode), External shift input (Super I mode)	Non-voltage input, Input time: 20 ms min.		
Timer function	Timer OFF/OFF-delay/ON-delay/One-shot, Timer time: 1 to 1,000 ms adjustable (for each bank respectively)		
Power supply	24 VDC, Ripple (P-P): 10% max.		
Current consumption	Normal mode: 1.5 W (62.5 mA max.), Eco-mode: 1 W (42.0 mA max.)		
Ambient temperature ²	-10 to +55°C, No condensation		
Vibration	10 to 55 Hz, double amplitude: 1.5 mm, 2 hours in each of X, Y and Z axis directions		
Material	Housing, cover: Polycarbonate		
Weight (with 2-m cable)	Approx. 110 g	Approx. 100 g	

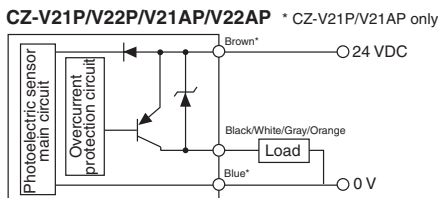
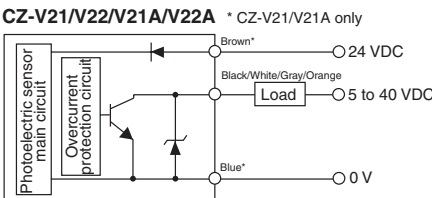
Input/output circuit

Connection

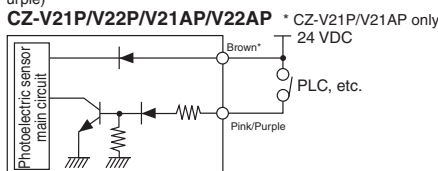
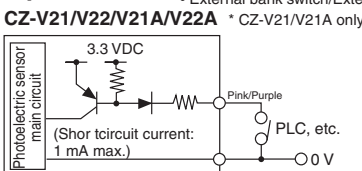


* CZ-V21/V21A/V21P/V21AP only

Output circuit



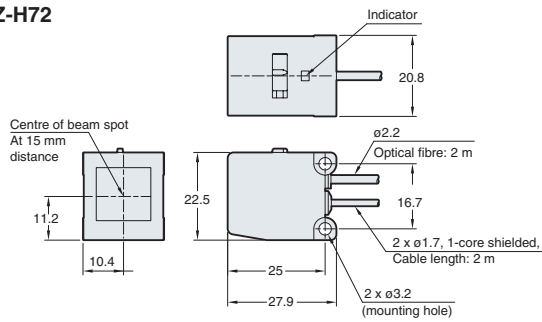
Input circuit



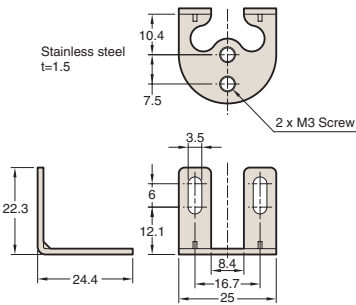
Dimensions

Unit: mm

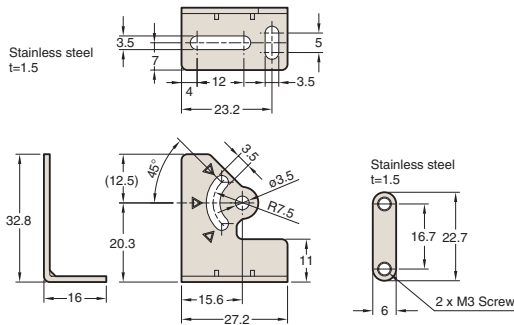
CZ-H72



Mounting bracket A*



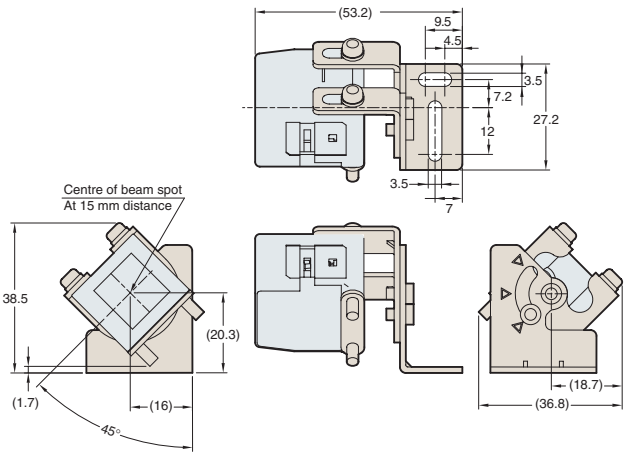
Mounting bracket B*



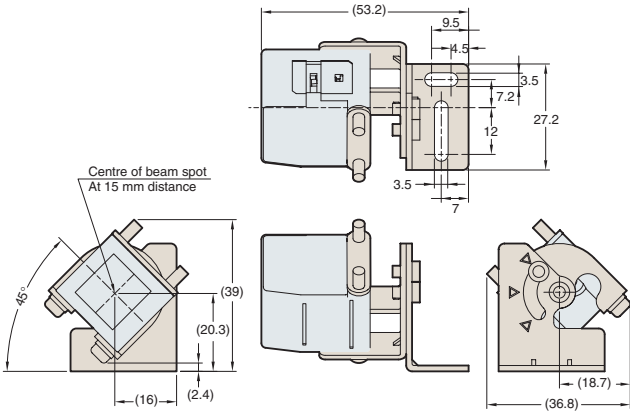
* Mounting bracket A/B is attached to CZ-H72

When the mounting bracket is attached

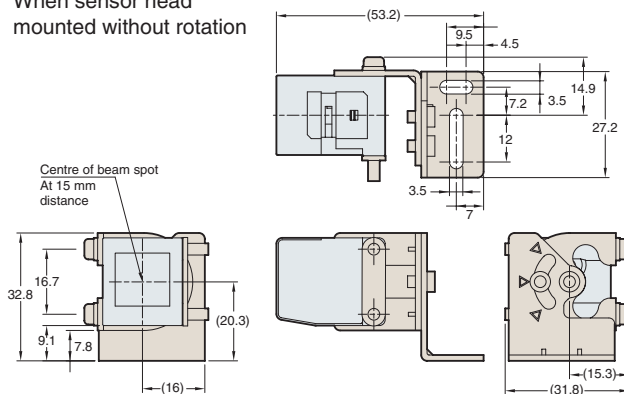
When sensor head rotated at 45° clockwise



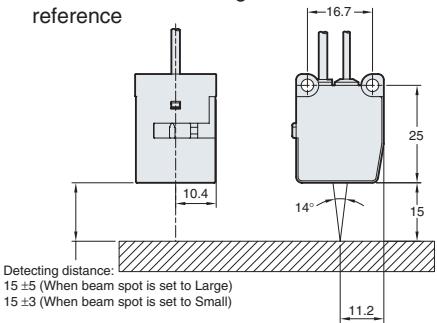
When sensor head rotated at 45° counterclockwise



When sensor head mounted without rotation



Sensor head mounting reference



Digital RGB Sensor Line-up

Lustre canceling diffuse reflective

CZ-H35S/CZ-H37S

Detects subtle difference of colours or patterns.
Unaffected by a target's lustre.



Unaffected by surface conditions
such as warpage, vibration, inclination of lustre

Long detection distance diffuse reflective

CZ-H32

Can be mounted at a distance from
targets. Unaffected by vibration.



3 Adjustable beam spots

Fluorescence detection UV sensor

CZ-H52

Unaffected by patterns or colours
of targets to detect fluorescent
marks



It radiates ultraviolet to detect fluorescent substances
or marks. Unaffected by patterns or colours of targets
to detect fluorescent marks.

"Detecting fluorescent
substances or marks"

Specifications are subject to change without notice

KEYENCE

For other countries, visit at: WWW.keyence.com

AUSTRIA
Phone: +43-2236-378266-20 Fax: +43-2236-378266-20

CANADA
Phone: +1-905-696-9970 Fax: +1-905-696-8340

CHINA
Phone: +86-21-68757500 Fax: +86-21-68757550

CZECH
Phone: +420 222 191 483 Fax: +420 222 191 200

FRANCE
Phone: +33 1 56 37 78 00 Fax: +33 1 56 37 78 01

GERMANY
Phone: +49-6102-36 89-0 Fax: +49-6102-36 89-100

HONG KONG
Phone: +852-3104-1010 Fax: +852-3104-1080

HUNGARY
Phone: +36 14 748 313 Fax: +36 14 748 181

ITALY
Phone: +39-2-6688220 Fax: +39-2-66825099

JAPAN
Phone: +81-6-6379-2211 Fax: +81-6-6379-2131

KOREA
Phone: +82-2-563-1270 Fax: +82-2-563-1271

MALAYSIA
Phone: +60-3-2092-2211 Fax: +60-3-2092-2131

NETHERLANDS
Phone: +31-30-2107995 Fax: +31-30-2107959

SINGAPORE
Phone: +65-6392-1011 Fax: +65-6392-5055

SLOVAKIA
Phone: +421 2 5939 6461 Fax: +421 2 5939 6200

SWITZERLAND
Phone: +41 43 455 77 30 Fax: +41 43 455 77 40

TAIWAN
Phone: +886-2-2718-8700 Fax: +886-2-2718-8711

THAILAND
Phone: +66-2-369-2777 Fax: +66-2-369-2775

UK & IRELAND
Phone: +44-1908-696900 Fax: +44-1908-696777

USA
Phone: +1-201-930-0100 Fax: +1-201-930-0099