

**Description & Features:**

- High quality gauge designed to work with a pneumatic transmitter or controller
- Stainless steel or brass wetted parts
- 3-15 psi with a variety of receiver ranges
- 316 stainless steel or brass wetted parts
- CRN registered
- 5 year warranty

**Applications:**

- Reliable indication of changes in pressure, temperature, flow, level, or other measured variables

Specifications	Stainless Steel Internals	Brass Internals
<b>Dial</b>	4.5" (115mm) white aluminum with black and red markings	4.5" (115mm) white aluminum with black and red markings
<b>Case</b>	Black phenolic with safety blowout back, solid front, integral back flange	Black phenolic with safety blowout back, solid front, integral back flange
<b>Solid Wall</b>	Phenolic	Phenolic
<b>Lens</b>	Polycarbonate	Polycarbonate
<b>Ring</b>	Phenolic	Phenolic
<b>Pointer</b>	Aluminum, anodized black, micrometer adjustable	Aluminum, anodized black, micrometer adjustable
<b>Socket</b>	316L SS	OT 58 brass
<b>Connection</b>	1/4" NPT or 1/2" NPT standard, bottom	1/4" NPT or 1/2" NPT standard, bottom
<b>Bourdon Tube</b>	316L SS, drawn seamless	Phosphor bronze
<b>Movement</b>	304 SS with over/under stops	304 SS with over/under stops
<b>Gasket Materials</b>	Silicone	Silicone
<b>Welding</b>	TIG	Silver alloy
<b>Over-pressure Limit</b>	25% of full scale value	25% of full scale value
<b>Working Pressure</b>	Maximum 75% of full scale value	Maximum 75% of full scale value
<b>Ambient/Process Temperature</b>	-40°F to 200°F (-40°C to 93°C) dry / -4°F to 150°F (-20°C to 65°C) glycerin-filled	-40°F to 200°F (-40°C to 93°C) dry / -4°F to 150°F (-20°C to 65°C) glycerin-filled
<b>Accuracy</b>	±0.5% ANSI/ASME Grade 2A	±0.5% ANSI/ASME Grade 2A
<b>Enclosure Rating</b>	IP65	IP65

**Order Codes (products in bold are normally in stock)**

Connection	1/4" NPT Bottom	1/4" NPT Bottom	1/4" NPT Back	1/4" NPT Back
Socket, Tube	Brass	SS	Brass	SS
3-15 psi/0-100%	PRC5081REC	PRC5041REC	PRC5281REC	PRC5341REC
3-27 psi/0-100%	PRC5082REC	PRC5042REC	PRC5283REC	PRC5342REC

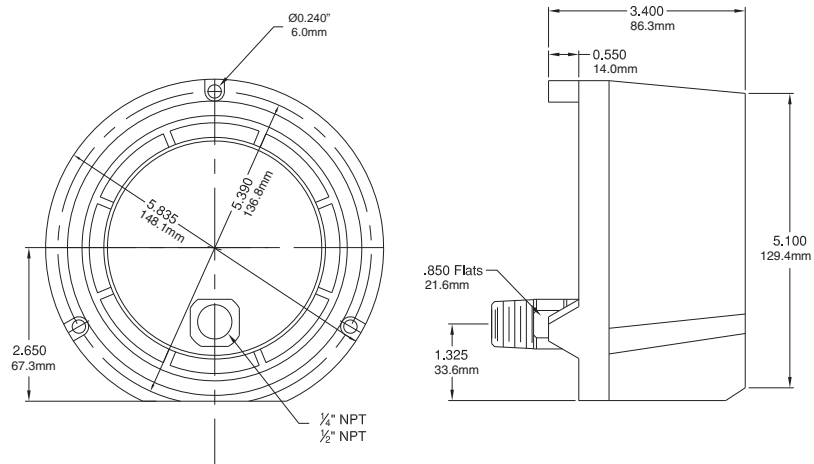
Other ranges and connection sizes available upon request. For scale change, refer to How to Order Guide for scale codes.  
0-10 sq/root available. **For options, attach suffix to end of order code: i.e. PRC5081REC-G for GLYCERIN FILL.**

**Option suffix:**

6HCS = 6" hinged case solid front (back connect only)  
FMR = Front mounting ring  
G = Glycerin filled (bottom connection only)

HCSF = Hinged case solid front (back connect only)  
SG-45 = Safety glass 4.5"

## 4.5" Back Connection



## 4.5" Bottom Connection

