



Description & Features:

- Extremely robust and stable long-term
- Shock and vibration resistant
- $\pm 0.25\%$ FSO BFSL accuracy
- 15,000 psi nominal pressure range
- Permissible overpressure up to 22,500 psi
- Standard 80% shunt calibration
- Eight gauge sensor design
- 1 year warranty

Applications:

- Designed to be used with WECO® 1502 style union fittings for high pressure/harsh oil well environments like fracturing, cementing, acidizing and mud pressure management

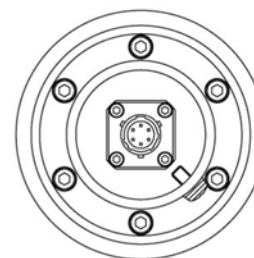
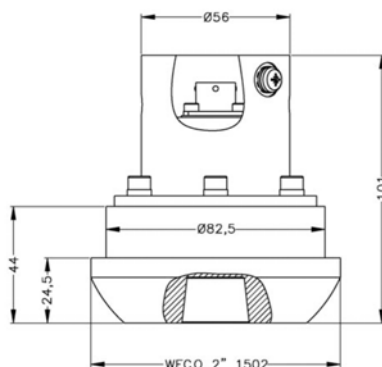
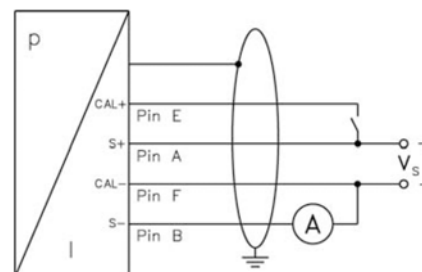
Specifications

Electrical Output Signal	2-wire: 4-20 mA
Electrical Connection	MIL-/ Bendix 6-pin
Excitation Voltage	VS = 10-30 VDC
Housing	316L SS
Pressure port/diaphragm	SS 1.4548 (17-4PH)
Normal Operating Temperature Range	-40°F to 257°F (-40°C to 125°C)
Compensated Temp. Range	23°F to 140°F (-5°C to 60°C)
Temp. Effect on Zero/Span	Less than $\pm 2\%$ FSO per 212°F (100°C)
Accuracy	$\pm 0.25\%$ FSO BFSL
Stability	Shock: 100g/11ms $\pm 0.5\%$ FSO per 6 months
Enclosure Rating	IP67

Order Codes

Range	Permissible Overpressure	Code
15,000 psi	22,500 psi	LOH425

Wiring Diagram



Note: Measurements are in mm

WECO® is a registered trademark of FMC Technologies